

Design EXPLORATION

WEEK 6

CONTENT

- Dress
- Jeans
- Shirt
- Top
- Blazer

DRESS



DESIGN 1



DESIGN 2



CASUAL WRAP AROUND DRESS



- This dress which was originally nudish pink with white squares I converted it into purple.
- The Criss cross neckline which I have taken it on the waist area connected to the flap bottom.
- The shoulder is cold shoulder like the original one but the dress straps have been curved giving it a boat neck illusion .

Bodycon off shoulder Dress

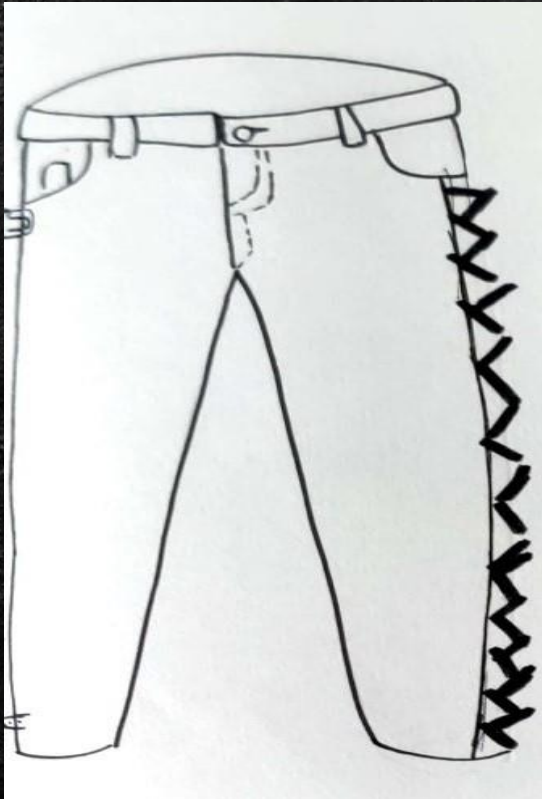


- This is an off shoulder bodycon dress .
- The colour is rosewood pink which is subtle yet complimenting the silhouette of the outfit .
The Criss cross neckline remains same with just a gap to make it more appealing .
- The bottom is a mermaid gather which is body hugging.

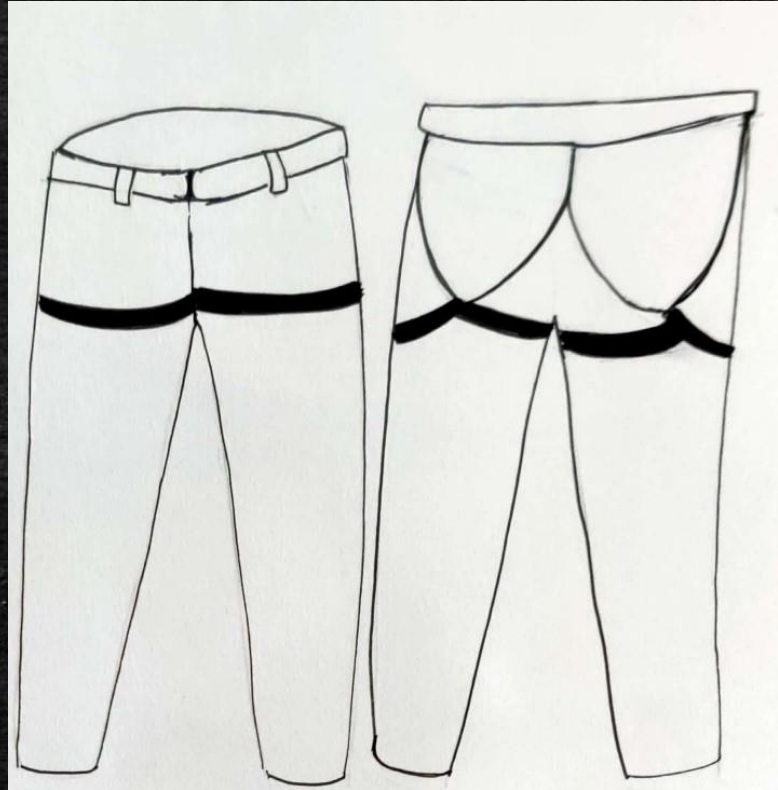
JEANS



Design 1



Design 2





- This jeans seems weird and too many concepts in one but has a realistic inspiration and message .
- This jeans is a two colour jeans sky blue and navy blue .
- One side of jeans has the Criss cross black leather belt which is symbolic of punishing the wrong .
- The other side which is the open belt loop on the sky blue side showcasing freedom.
- These changes makes it chic unique and edgy at the same time

Grey Jeans



- This is again more of a jeans accessory for elevating the overall look .
- This is inspired from the traditional padded bra . This is where I visualized the bra turn and twisted in Oder to create an illusional thigh gap .
- The waist has a belt like hook which also plays the role of a tummy tucker concept .
- Grey colour has been used to enhance the back colour detailing .

SHIRT



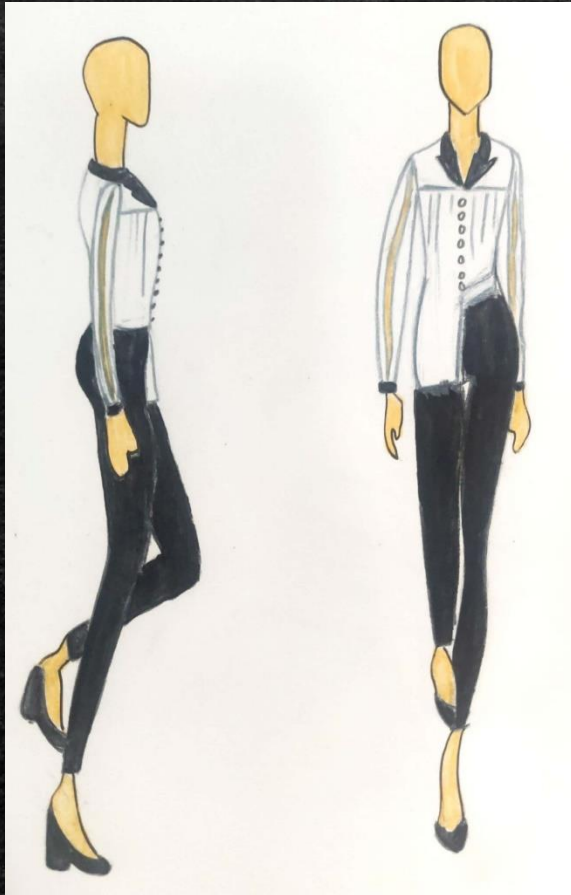
Design 1



Design 2



White shirt up and down



- This shirt is of same fabric but the collar is notched to give it that formal look.
- The sleeves have a hole giving a slight skin to make it comfortable .
- The hem of the shirt it different on both sides inspired from the styling methods of “how to style a white shirt ”

One shoulder shirt

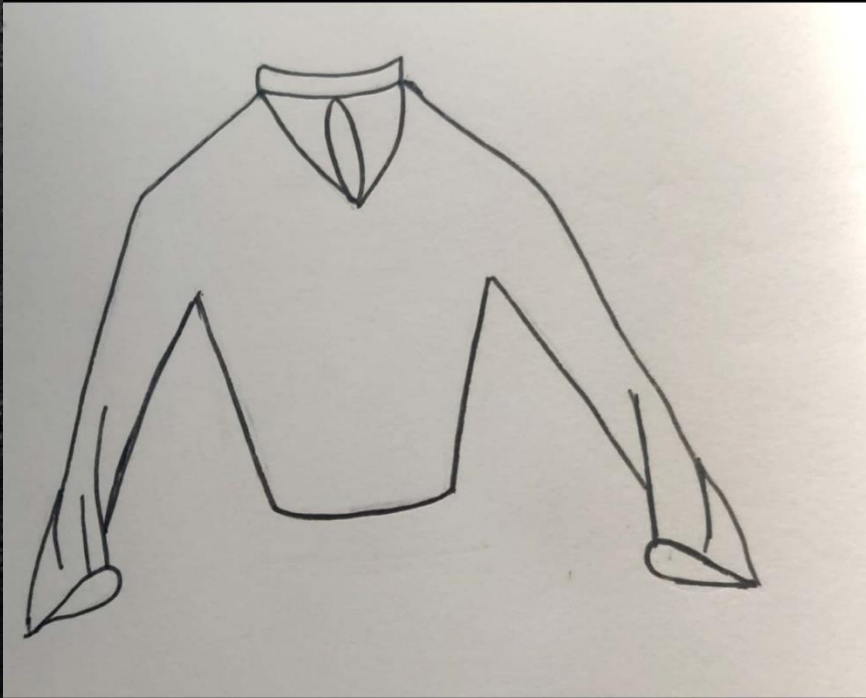


- This is again the same shirt but it is changed .
- The tie which was originally there remains the same falling on the side shoulder .
- It closes like the original shirt but on one side .
- It is full sleeves on one hand and no sleeves on the other .

TOP



DESIGN 1



DESIGN 2



Coral top



- This is a coral colour top with fabrics which are more bod fitting .
- These are angle sleeves which are longer a loose .
- It perfectly matches the fitted top.
- Its plain which makes it simple and elegant.

Butterfly choker top



- This is clearly inspired from a butterfly .
- This is where the butterfly's antenna keeps the choker V neck intact .
- The butterfly is crop top with a sheer long layer on the top.
- This is a chic transparent yet forest vibe with the indigo green tone .

BLAZER



Design 1



Design 2



Graphics Blazer



- This is mainly inspired from the Rajasthani patchwork .
- It was going to be an indo-western blazer but the whole black n white theme just caught me off guard .
- It was giving the whole graphics vibe.
- The components are as it is the same .

Backless black Blazer



- This blazer is charcoal black .
- The design details on the front are exactly the same .
- The back has a back necklace (a thin elegant golden chain) with a sheer lace complimenting the look.
- The back has a V cut where the flaps are ending on each other .